

MONTHLY MEMBERSHIP PROGRESS REPORT

LOCATION THAILAND

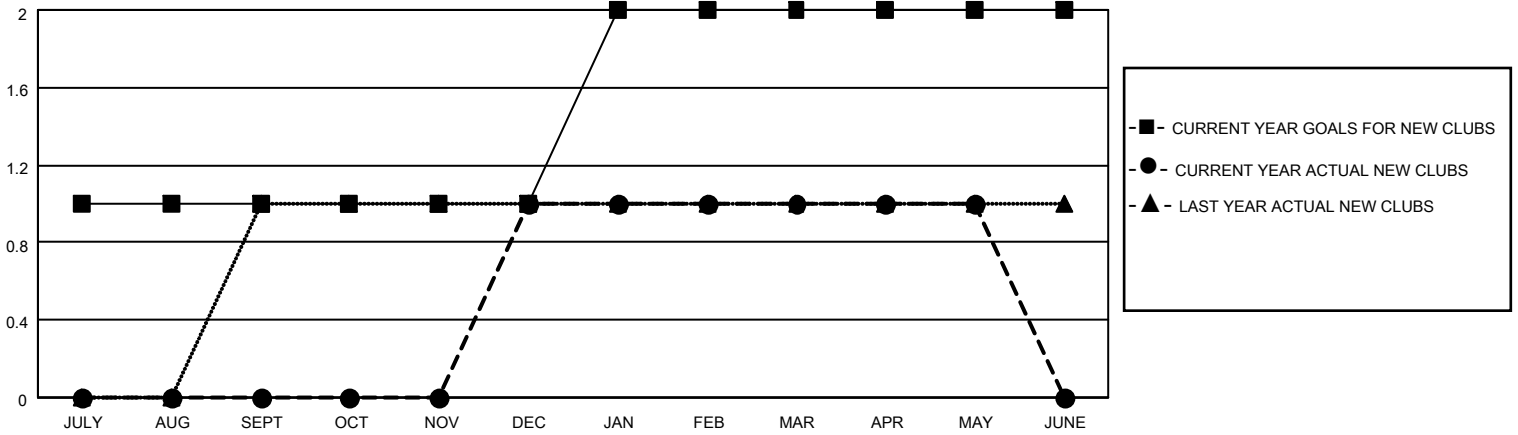
District 310 A1

Results as of: 5/31/2021

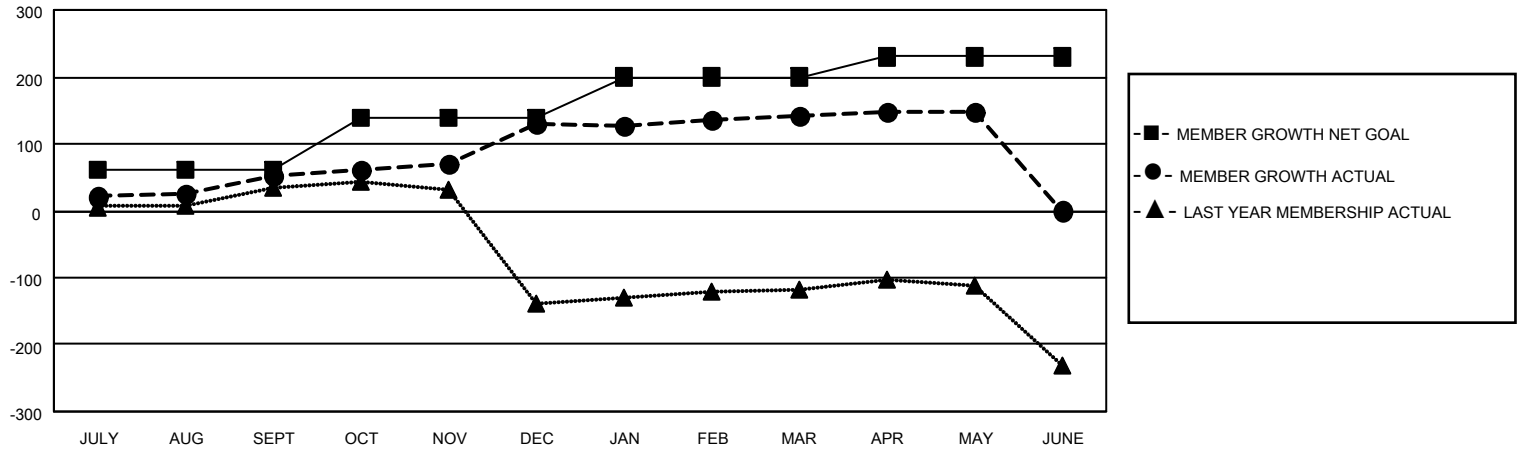
| Clubs | | | |
|-----------------------|---------------|-----------|---------------|
| RESULTS FOR 2020-2021 | | | |
| QUARTER | NEW CLUB GOAL | NEW CLUBS | DROPPED CLUBS |
| JULY/AUG/SEPT | 1 | 0 | 0 |
| OCT/NOV/DEC | 0 | 1 | 0 |
| JAN/FEB/MAR | 1 | 0 | 0 |
| APR/MAY/JUNE | 0 | 0 | 0 |

| Members | | | |
|-----------------------|------------------------|----------------------|---|
| RESULTS FOR 2020-2021 | | | |
| QUARTER | MEMBER GROWTH NET GOAL | MEMBER GROWTH ACTUAL | DROPPED MEMBERS ACTUAL (including transfers) |
| JULY/AUG/SEPT | 60 | 60 | 1 |
| OCT/NOV/DEC | 80 | 103 | 24 |
| JAN/FEB/MAR | 60 | 23 | 6 |
| APR/MAY/JUNE | 30 | 22 | 18 |

GOALS AND ACTUAL NEW CLUBS CUMULATIVE



GOALS AND ACTUAL MEMBERS CUMULATIVE



| | | |
|--|---|--|
| DROPPED CLUBS: 0 | 28 CLUBS OF 39 ADDED 1 OR MORE NEW MEMBERS | <u>GENDER DISTRIBUTION</u> MALE 404 (44.25%) FEMALE 509 (55.75%) |
| <u>DROPPED MEMBERS</u> DECEASED 5 CLUB CANCELLED 0 OTHER 44 TOTAL 49 | CLICK HERE FOR CUMULATIVE MEMBERSHIP DATA | TOTAL FAMILY UNIT MEMBERS 94 FAMILY MEMBERS PAYING HALF DUES 49 |